

IFPDA Online Exhibition Proposal #3

1



PABLO PICASSO

[Drawing] Portrait d'Édouard Pignon, 1951
(October 5, Vallauris)

Drawing

Image/Sheet: 25 3/4 x 19 7/8 inches

Framed: 35 1/4 x 28 3/4 inches

Dedicated in ink, lower right

PICP2017022

2



PABLO PICASSO

[Drawing] Portrait de la Fille de Charles Morice,
1906

Pencil

26 4/5 x 18 9/10 in. (68.07 x 48.01 cm)

Image/Sheet: 26 3/4 x 18 7/8 inches

Framed: 32 1/8 x 24 1/8 inches

Signed in pencil, upper left

PICP136777

3



PABLO PICASSO

B0001 Le Repas frugal, 1904 (September, Paris)

Etching and scraper

Image: 18 1/8 x 14 7/8 inches

Sheet: 22 11/16 x 17 1/2 inches

Framed: 28 3/4 x 24 1/8 inches

PICP2019046

4



PABLO PICASSO

B0138 Homme dévoilant une femme, 1931

Drypoint

Image: 14 7/16 x 11 1/2 inches

Sheet: 17 1/2 x 13 1/4 inches

PICP20200122

IFPDA Online Exhibition Proposal #3

5



PABLO PICASSO

B0218 Femme au Fauteuil songeuse, la Joue sur la Main, 1934 (March 9, Paris)

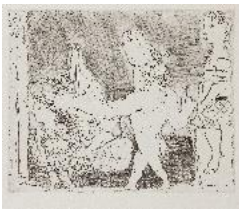
Engraving

Image: 11 x 7 7/8 inches

Sheet: 19 3/4 x 15 1/4 inches

PICP12185

6



PABLO PICASSO

B0223 Minotaure aveugle guidé dans la Nuit par une Petite Fille au Pigeon (S.V. 96), 1934 (October 23, Paris)

Etching

Image: 9 1/2 x 11 3/4 inches

Sheet: 13 3/16 x 17 1/2 inches

PICP20210240

7



PABLO PICASSO

B0225 Minotaure aveugle guidé par Marie-Thérèse au Pigeon dans une Nuit étoilée (S.V. 97), 1934

Aquatint, scraper, drypoint and burin

Image: 9 3/4 x 13 3/4 inches

Sheet: 13 1/8 x 17 5/16 inches

Framed: 21 x 24 1/2 inches

Signed in pencil, lower right

PICP20210241

IFPDA Online Exhibition Proposal #3

8



PABLO PICASSO

B0250 Sculpture. Tête de Marie-Thérèse, 1933

(February 18, Paris) Ed. 16/50

Drypoint and scraper

Image: 12 1/2 x 9 inches

Sheet: 18 1/2 x 14 1/2 inches Framed: 24 5/8 x
20 5/8 inches

Stamp signed

PICP12212

9



PABLO PICASSO

B0321 Tête de Femme, 1939 (June 22, Paris)

Burin

Image: 15 3/8 x 10 inches

Sheet: 17 5/8 x 13 3/8 inches

Framed: 25 1/2 x 21 1/2 inches

PICP00661

10



PABLO PICASSO

B0585 Le Crapaud, 1949 (13 January)

LITHOGRAPH

Image: 19 1/2 x 25 1/4 inches

Sheet: 19 1/2 x 25 3/4 inches

YES, IN RED CRAYON

PICP10197

11



PABLO PICASSO

B0588 Femme Au Fauteuil No 4 (d'après le violet),

1949 (January 3)

Lithograph

Image: 27 7/8 x 20 1/2 inches

Sheet: 30 x 22 1/4 inches

Frame: 38 x 32 inches

Signed in pencil, lower right

PICP2018020

IFPDA Online Exhibition Proposal #3

12



PABLO PICASSO

B0612 La Femme à la Résille (Femme aux Cheveux verts), 1949 (30 May)

Lithograph

Image: 25 3/4 x 19 3/4 inches

Sheet: 26 x 20 1/4 inches

Framed: 38 1/4 x 31 1/2 inches

Signed in pencil, lower right

PICP2018021

13



PABLO PICASSO

B0854 Jacqueline de Profil à droite, 1958
(December 27, Cannes)

Lithograph

Image: 22 x 17 3/8 inches

Sheet: 25 3/4 x 19 3/4 inches

Framed: 30 x 23 5/8 inches

Signed in pencil, lower right

PICP20210242

14



PABLO PICASSO

B0923 Portrait de Jacqueline, 1959

Linocut

Image: 25 x 20 7/8 inches

Sheet: 29 1/2 x 24 1/2 inches

Framed: 36 3/8 x 31 7/8 inches

Signed in pencil, lower right

PICP20190108

IFPDA Online Exhibition Proposal #3

15



PABLO PICASSO

B1066 Portrait de Jacqueline aux cheveux lisses,
1962

Linocut

Image: 25 3/16 x 20 11/16 inches

Sheet: 29 5/8 x 24 7/16 inches

Framed: 37 1/4 x 31 3/4 inches

Signed in pencil, lower right

PICP20200119

16



PABLO PICASSO

B1095 Portrait de Jacqueline en Carmen
(L'Espagnole), 1962 (15 April, Mougins)

Linocut

Image: 13 3/4 x 10 5/8 inches

Sheet: 24 1/2 x 17 3/8 inches

Framed: 30 x 23 inches

Signed in pencil, lower right

PICP2018023

17



PABLO PICASSO

B1145 Portrait de femme à la fraise et au
chapeau, 1962

Linocut

Image: 13 3/4 x 10 5/8 inches

Sheet: 24 7/16 x 17 5/16 inches

Framed: 34 x 26 3/4 inches

Signed in pencil, lower right

PICP20200120

IFPDA Online Exhibition Proposal #3

18



PABLO PICASSO

B1333 La Femme qui pleure, 1937
Aquatint, scraper, drypoint and burin

Image: 27 1/8 x 19 1/2 inches
Sheet: 29 1/2 x 21 3/4 inches
Framed: 43 x 34 1/2 inches
Signed and dedicated, lower right
PICP20200120

19



PABLO PICASSO

B1340 Tête de Femme No. 2. Portrait de Dora Maar, 1939 (April 20)
Aquatint

Image: 11 3/4 x 9 1/4 inches
Sheet: 17 3/4 x 13 1/4 inches
Framed: 22 1/16 x 19 3/8 inches

PICP11974

20



PABLO PICASSO

B1583 Couple en Carrosse et pauvre Piéton, 1968
(May 21.III, Mougins)
Etching

Image: 3 1/2 x 4 7/8 inches
Sheet: 8 1/4 x 6 5/8 inches
Signed in pencil on the justification page
PICP2016053.05

21



PABLO PICASSO

B1593 Vieux Beau saluant très bas une Pupille de la Célestine, 1968 (May 26.II, Mougins)
Sugarlift aquatint

Image: 2 5/16 x 4 5/8 inches
Sheet: 8 1/4 x 6 5/8 inches
Signed in pencil on the justification page
PICP2016053.50

IFPDA Online Exhibition Proposal #3

22



PABLO PICASSO

Ba0292 Flûtiste et dormeuse II, 1933

Drypoint and etching

Image: 3 ½ x 3 1/8 inches

Sheet: 12 ¾ x 9 5/8 inches

Framed: 16 1/2 x 13 1/2 inches

PICP2019030

23



PABLO PICASSO

Ba1245 Portrait de Jacqueline, 1963

Linocut

Image: 25 ¼ x 20 7/8 inches

Sheet: 29 ¾ x 24 3/8 inches

Framed: 36 x 31 1/2 inches

Signed and dated, lower right

PICP2019037

24



PABLO PICASSO

Ba1282 Femme au chapeau de paille bleue, 1962

(January 16, Mougins)

Linocut

Image: 13 3/8 x 10 5/8 inches

Sheet: 24 3/4 x 17 1/2 inches

Framed: 30 x 24 3/4 inches

PICP00508

IFPDA Online Exhibition Proposal #3

25



EDVARD MUNCH

W006 Trøst (Consolation), 1894

Drypoint

Image: 8 1/2 x 12 1/2 inches

Sheet: 12 1/2 x 20 inches

Framed: 20 1/8 x 22 7/8 inches

Signed in pencil, lower right

MUNC00093

26



EDVARD MUNCH

W010 Dagen Derpå (The Day After), 1894

Drypoint

Image: 8 1/8 x 11 5/8 inches

Sheet: 16 3/8 x 20 1/8 inches

Framed: 21 1/4 x 23 5/8 inches

Signed in pencil, lower right

MUNC00080

27



EDVARD MUNCH

W059 Det syke bar (The sick child), 1896

Etching and drypoint

Image: 5 7/16 x 7 3/16 inches

Sheet: 13 3/4 x 16 13/16 inches

Framed: 18 1/2 x 20 1/4 inches

Signed in pencil, lower right

MUNC00095

28



EDVARD MUNCH

W078 Løsrivelse II / Separation II, 1896

Lithograph

Image: 16 3/16 x 24 5/8 inches

Sheet: 21 x 30 9/16 inches

Framed: 26 7/16 x 35 inches

MUNC00091

IFPDA Online Exhibition Proposal #3

29



EDVARD MUNCH

W205 Old Man Praying, 1895

Woodcut

Image: 18 3/16 x 13 inches

Sheet: 28 3/4 x 25 3/16 inches

Framed: 32 1/4 x 28 3/4 inches

Signed in pencil, lower right

MUNC00094

30



EDVARD MUNCH

W244 Die Brosche. Eva Mudocci, 1903

Lithograph

Plate: 23 7/8 x 18 3/8 inches

Sheet: 27 3/8 x 20 1/8 inches

Framed: 36 x 28 1/2 inches

Signed in pencil, lower right

MUNC00094